

The Advance

The Bulletin of the Greater Wayne Area Branch of the AAUW



Volume XLV1 No. 5

<http://greaterwaynearea-nj-aauw.net/>

May/Summer 2015

AAUW GREATER WAYNE AREA BRANCH PURPOSE

The purpose of this branch shall be to further AAUW's mission to advance equity for women and girls through advocacy, education, philanthropy and research.

PRESIDENT'S MESSAGE



GWA members at AAUW-NJ State meeting

Dear Ladies,

Nine members returned from AAUW-NJ's state meeting at Forsgate Country Club on April 11 with energy and vitality to spring ahead with new ideas for carrying out our mission! Attorney Susan L. Burke, our National LAF Representative, held the mike and our attention in explaining her position in bringing justice and fostering changes in military protocol to service women who were sexually abused by their peers while serving. With our support dollars through dues, we enable Ms. Burke to help fix the military's failure to prosecute rape and sexual assault victims. By just belonging and supporting our branch we make a difference at the national, state and local level!

For our new slate of board members we have the Public Policy position open. Please consider this an opportunity to serve, learn and share about our activism on a state and national level. This is a



Dorothy and Antoinette Gingerelli, AAUW NCCWSL UN Student Ambassador

wonderful opportunity for new members. If interested please call me for support.

Respectfully,
Dorothy

Right: Photos of GWA library displays shown at State meeting



Membership Dues information see page 4

2014-2015 OFFICERS

President

Dorothy Quinn

Program

Lorraine La Shell

Membership

Julie Tiso

Communications

Ruth Liston

Nancy Freiler

Finance

Stella Hyman

Parliamentarian

Bea Kettlewood

Interbranch Chairwomen

Bea Kettlewood

Janice Rutherford

Website Engineer

Ann Raynor

Caroline Mossip

Advance Editor

Peggy Gardner

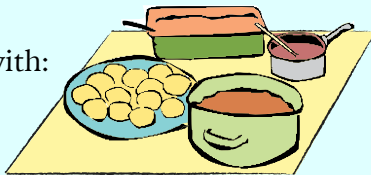
SUMMER SOCIAL JULY 15, 2015

Once again, Bea Kettlewood has offered her home as the setting for the Summer Social. In addition to enjoying a relaxing evening of good food and conversation, the summer social is an opportunity to introduce potential members to our branch.

To make the evening more interesting, the program committee will challenge us to a game of AAUW Jeopardy. Expect fun and laughter as we learn about our organization.

We meet at 6:30 PM for appetizers and liquid refreshment; dinner is at 7:00. Dinner is pot luck with each member contributing to the meal. Bea will supply wine, soda and paper products. As in the past, a \$5 donation would be welcome to help cover these costs.

If your last name begins with:
A-K - Appetizers
L-Z - Cold main dish
Board - Dessert



Be prepared to take home leftovers.

RSVP to Bea. A reply by July 10 would be helpful in case food variety needs to be adjusted. Please let Win Reinhardt know if you can come early for set-up or stay late for take-down.

Come and bring a friend!

GAMES NIGHT

TGIF's (Thank Goodness It's Friday) next Games Night will be May 15 at Dot Anton's house. We begin at 7:30 pm and play games until 10, at which time we have light refreshments.

June Games Night will be held on June 12 at Ann Raynor's house.

Games Night is open to all members. Please call the hostess at least 3 days in advance to let her know you are coming.

CALENDAR OF EVENTS

May 4	Bridge Group 7:30 (Every Monday)
May 5	AAUW-NJ Trip to Valkill
May 15	Games Night 7:30
May 20	Art Interest Group 1:30
May 20	Scholarship/Officer Induction Dinner at Villa Verde 6:30 pm
May 28	Literature Group 7:30
May 29	Lunch Bunch, Presby Iris Gardens and lunch in Montclair 12:30
June 1	Membership Dues due
June 12	Games Night 7:30
June 15	Advance Deadline
June 25	Literature Group Planning Dinner
June 30	Change-over Board Meeting 5:30 Bea Kettlewood's
July 15	Summer Social- Bea Kettlewood's 6:30
August 15	Deadline for the Advance

LITERATURE GROUP

Win Reinhardt

PLEASE NOTE THE LOCATION CHANGES.

All meetings start 7:30 pm. All are welcome. Please let the hostess know 3 days in advance if you are planning on attending. However, last minutes changes are expected and can be accommodated within reason.

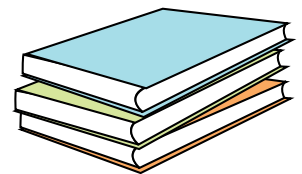
Date: May 28

Hostess: Winifred Reinhardt

Books: *Savage Harvest*, *Sycamore Row*

Authors: Carl Hoffman, John Grisham

Leader: Win Reinhardt



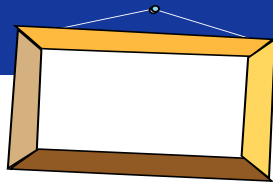
Literature Group Planning Dinner

Date: June 25

Hostess: Stella Hyman

Please let Stella know as early as possible if you are planning on attending. She will coordinate the menu.

ART INTEREST GROUP



Bea Kettlewood

The final meeting for 2014-2015 will be May 20th, 1:30 - 3 PM. We will review Jeffersonian classicism in architecture and continue viewing the ragged lines between the style distinctions from realism moving to naturalism to romanticism in painting and sculpture during the 18th C. and early 19th C. The styles overlap in time period with neo-classicism but eventually predominated. Call if you plan to attend.

LUNCH BUNCH

Iris Garden Trip and Montclair Lunch Friday, May 29

Marianne Ritter Judy Shivy

Lovers of good food and beautiful flowers should mark their calendars for a special Montclair Lunch Bunch on Friday, May 29 followed by an excursion to the Iris Gardens in Upper Montclair. Carpools will be organized to the lunch restaurant in Montclair and also after lunch to the Presby Iris Gardens. Lunch will be at 12:30 p.m. with more details to follow. Those wishing to attend should phone either Marianne Ritter or Judy Shivy by May 26 at the latest. The May 29 outing will be our last Lunch Bunch before a summer break. Lunch Bunch will resume in September.



BRIDGE

Marlys Huss

The bridge group continues to meet on Monday evenings. We start at 7:30 pm and we play until 9:30 pm, after which we have tea, coffee and dessert. Please call Marlys for the weekly location of the game.

MEMBERSHIP

Please email your cell phone number to Julie Tiso so she can update member info.

SOCIAL CONCERNS

Marlys Huss

Bea Kettlewood, Gloria McCormick and Janice Rutherford delivered clothing and bedding to the Strengthen Our Sisters thrift store in Hewitt. The donations were from residents of Cedar Crest.

My request concerns supporting the Mission Quilts project for a group of women at Our Saviour Lutheran Church of Pompton Plains. For the past 15 years they have made quilts with donated fabrics and estimate that they have contributed over 500 quilts. This is what they need: Remnants of fabrics, cotton or cotton blends (at least 16 inches square) sheets, pillowcases, lightweight blankets, even curtains. The quilts are approximately 60x80 inches when finished. They are 3 layers. The top is a patchwork of fabrics, the middle is a light blanket, batting or a sheet. The back is a sheet. The quilts are sent to areas of need worldwide. In January quilts were sent to Armenia and in March quilts were sent to Syrian refugees in Lebanon. You may Google Lutheran World Relief to find out more information.

If you have any of the needed items or have questions, you may call me or email me.

Thank you.
Marlys Huss

SCHOLARSHIP COMMITTEE

Caroline Mossip

Your scholarship committee is pleased to let you know that we have had great interest in our scholarship, with over 20 applications received. The committee will be meeting by the end of April to review all qualified applicants and decide on our 2015 Greater Wayne Area Scholarship winner. You will have the opportunity to meet our scholarship winner at our dinner meeting on May 20, at which time she will be presented with a \$1500 scholarship check. It is thanks to the generosity of all our members that we are able to provide this valuable support to a deserving woman over 25 who is pursuing an associate's or bachelor's degree.

Caroline Mossip, 2015 Scholarship Committee Chair,
Marianne Ritter, Linda Trongone, Julie Tiso, Nancy Freiler, Beth Marmolejos.

PUBLIC POLICY

Janice Rutherford

Congresswoman Rosa DeLauro (D-CT) and Senator Barbara Mikulski (D-MD) reintroduced the Paycheck Fairness Act legislation which would help close the wage gap between women and men working the same jobs. On average, women make just 78 cents for every dollar made by a man.

The Paycheck Fairness Act builds upon the landmark Equal Pay Act signed into law in 1963 by closing loopholes that have kept it from achieving its goal of equal pay. The bill would require employers to show pay disparity is truly related to job-performance, not gender.

It also prohibits employer retaliation for sharing salary information with coworkers.

The bill empowers women in the workplace through a grant program to strengthen salary negotiation and other workplace skills, and requires the Department of Labor to enhance outreach and training efforts to eliminate pay disparities.

Contact your Senators and Representative to encourage them to support the Paycheck Fairness Act.

PROGRAM ANNUAL AWARDS DINNER MAY 20, 2015

Lorraine LaShell

The highlight event of our branch is the Annual Awards Dinner when we present a scholarship to a deserving woman over 25 who is pursuing an associate or bachelor degree. We will award a \$1,500 scholarship in addition to sending \$500 to the AAUW National Scholarship Fund. We can all be proud of our efforts to support women in achieving their educational goals.

This year's dinner will be held on May 20 at 6:30 pm at Villa Verde Restaurant, 120 Terhune Drive in Wayne, 973-616-0999.



Villa Verde has a reputation for outstanding Portuguese and Spanish cuisine and fine dining service. Dinner will be served family style and include cold antipasto, salad, Veal

Francaise, Chicken Marsala, Penne Pasta with Shrimp in Pink Vodka Sauce, followed by coffee and dessert. Accompanying the entrees will be Saffron Rice, Vegetables and Spanish Potatoes.

Price: \$38.00 (includes tax and tip)
Mixed drinks and wine are extra and available at the bar.

Please plan on attending and invite a friend. The Awards Dinner offers a wonderful opportunity to show off our branch and the work we do to fulfill our mission.

We are counting on a good turnout to congratulate our 2015 scholarship winner. Please respond by May 13 to Stella. See information below.

MEMBERSHIP DUES JUNE 1

Membership Dues are due on June 1. The new approved amount is \$80. If you choose to enclose a separate check for membership dues, please do so at this time.

Please send 2 **SEPARATE CHECKS** for the dinner (\$38) and dues (\$80) made out to AAUW-GWA to Stella Hyman. If you are not able to attend the dinner please let Stella know.

AAUW GREATER WAYNE AREA BRANCH PURPOSE

The purpose of this branch shall be to further AAUW's mission to advance equity for women and girls through advocacy, education, philanthropy, and research

DIVERSITY STATEMENT

In principle and practice, AAUW values and seeks a diverse membership. There shall be no barriers to full participation in this organization on the basis of gender, race, creed, age, sexual orientation, national origin, disability, or class.

VALUE PROMISE

By joining AAUW, you belong to a community that breaks through educational and economic barriers so that all women have a fair chance.



Greater Wayne Area Branch
428 Boulevard
Pompton Plains, NJ 07444

MEMBER TOWNS

Bloomingtondale
Butler
Englewood
Haledon
Kinnelon
Little Falls
North Haledon
Nutley
Pequannock
Pompton Lakes
Pompton Plains
Wayne
West Milford

