

The Advance

The Bulletin of the Greater Wayne Area Branch of the AAUW



Volume XLV11 No. 4

<http://greaterwaynearea-nj.aauw.net/>

March/April 2016

AAUW GREATER WAYNE AREA BRANCH PURPOSE

The purpose of this branch shall be to further AAUW's mission to advance equity for women and girls through advocacy, education, philanthropy and research.

FROM THE CO-PRESIDENTS' DESK...

Dear GWA Branch Members,

As we leave the doldrums of winter, at least as predicted by Punxutawney Phil, let's review what our branch accomplished in January and February and what opportunities we will have in March and April to keep Moving Forward.

The January/February highlights include:

- The formation of a Bylaws Committee to update our bylaws as mandated by National. The committee took the opportunity to thoroughly review and make update recommendations for the entire set of bylaws.
- At our January 13 meeting the presentation, SMART WOMEN MAKE \$MART MONEY CHOICES, was well-received. Many members braved the iffy weather to attend, as well as a number of non-members. All present seemed to agree that the information presented was valuable to them.
- The Board met on January 26. Many issues and ideas were discussed (see your Board Minutes for specifics), including the AAUW National and NJ key STEM initiatives of Teen Tech, Tweentech and Tech Trek, targeted toward middle and high school girls, and the Title IX effort. These initiatives will continue to be included on future board meeting agendas as we determine how the GWA Branch can continue to support and be involved in these important programs.
- Three members attended the Human Trafficking Summit, held at Calvary Temple in Wayne. Attendees received up-to-date info about fighting trafficking that will enable them to keep our branch

informed and better able to support this national AAUW mission-based program.

- The Girls Hall of Fame Committee met and has made significant progress toward planning and executing the 2016 GH of F Program.

Building on the achievements above, here are the significant challenges and activities that we have in store for the March/April timeframe:

- You are reminded to keep your eyes and ears open as we seek nominations for our 2016 GH of F awards. Members continue to be our best source for nominees. Please see the included flyer for all the details.
- March is Women's History Month. In recognition of this our March 29 general meeting will include a presentation about the American artist, Georgia O'Keefe, who is recognized as the 'Mother of American Modernism.' The presenter is our own Marilyn Fish. See the flyer for all the details.
- Be on the lookout for a Meeting Preference Survey. Please complete the survey to provide your valued input. The surveys must be returned by March 29.
- You will receive a copy of the proposed bylaws for your review in late March or early April. Please review and bring your comments and/or questions with you to our April meeting.
- Seriously consider attending the AAUW NJ annual meeting on April 9 at Forsgate. We can plan carpooling and have a fun and informative day. Details will be available shortly.
- The branch annual meeting will be held on Tuesday, April 19 at Passaic County Technical Institute. It will be a lunch meeting with our primary focus on the bylaws updates. What could be better than having the opportunity to address the critical issues that we will discuss while enjoying a gourmet

lunch, prepared and served by the accomplished PCTI culinary students? Anyone who attended the first lunch meeting at PCTI can attest to this. All are urged to attend the meeting and take the opportunity to voice your opinions and fully participate in our effort to keep the GWA Branch Moving Forward.

We look forward to working with you to achieve great things as we near the end of our 2015-2016 year.

Lorraine LaShell & Jeanne Michaud
Co-Presidents

PUBLIC POLICY

Beth Marmolejos

AAUW Member Appointed to Campus Sexual Assault Task Force

Congratulations to AAUW member, Virginia Lyttle, and the Legislative Watch Committee on Ginny's appointment to the NJ State Task Force on Campus Sexual Assault. New Jersey created the task force to investigate methods of preventing sexual assault on college campuses and improving how schools respond to reported incidents. The 12-member panel, created through legislation signed by Gov. Chris Christie in December, is charged with evaluating current policies and practices at New Jersey colleges and universities as well as hearing testimony from sexual assault survivors and advocates for victims. It will be asked to make recommendations about sexual assault prevention and protocols for responding to reports of campus sexual assault and providing victim support services. In addition to Ginny, the task force will include representatives from colleges, law enforcement and the New Jersey Coalition Against Sexual Assault, among others.



Beth Marmolejos

AAUW Submits Statements to the U.N. Commission on the Status of Women

The Economic and Social Council (ECOSOC) is at the heart of the United Nations system to advance the three dimensions of sustainable development – economic, social and environmental. It is the central platform for fostering debate and innovative thinking, forging consensus on ways forward, and coordinating efforts to achieve internationally agreed goals. It is also responsible for the follow-up to major UN conferences and summits.

As an ECOSOC-accredited nongovernmental organization, AAUW is invited to participate in the annual Commission on the Status of Women (CSW) taking place from March 14-24 at the United Nations Headquarters. AAUW submits a written statement to the CSW annually addressing the priority themes. AAUW's statement offers recommendations to governments, corporations, and institutions of higher education on how to increase women's access to education in science, technology, engineering, and mathematics. Go to <http://www.aauw.org/files/2015/02/AAUW-CSW60-Statement-nsa.pdf> to view a copy of the 2016 written statement.

Learn how to get the salary you deserve!

EQUAL PAY DAY IS APRIL 12. TAKE ACTION TO CLOSE THE GENDER PAY GAP!

Women are paid on average just
79 percent
of what men are paid.

You can change this. AAUW Start Smart salary negotiation workshops can help.

CLOTHING DONATIONS NEEDED



The New Jersey One-Stop Career Centers, located throughout New Jersey, offer services (free of charge) to help unemployed, unskilled, and displaced individuals develop the skills needed to succeed in a 21st century work environment. Women in this program need clothes to go on job interviews and attend job fairs. Often the only thing stopping them from getting a job is a lack of appropriate clothing

Many of us have articles of clothing suitable for work environments, clothes we no longer wear or need. Let's take a lead from Oprah who recently cleaned out her closets and is donating the proceeds of their sale to charity. If you need a little push, here are some tips for cleaning out your closet:

Rule 1: If you haven't worn something for over two years, get rid of it.

Rule 2: If it doesn't fit you anymore, get rid of it.

Rule 3: Don't fantasy dress. If an item fits the lifestyle you want but not the lifestyle you live, get rid of it.

Rule 4: Everything in your closet should promote joy, beauty and usefulness.

Rule 5: If something brings up a bad memory or has a negative energy around it, purge it.

Rule 6: Get rid of duplicates.

Bring your gently used business clothes (larger sizes most welcome) to the March 29 general meeting for donation to the Paterson One-Stop Career Center.

CALENDAR OF EVENTS

Mar. 7	Bridge Group 7:30 (Every Monday)
Mar. 11-13	Marilyn Fish Art Show, St. Catherine of Bologna, Ringwood
Mar. 11	Games Night Win Reinhardt's 7:30
Mar. 15	Board Meeting 4:30-6:00 Ruth Liston's
Mar. 24	Literature Group 7:30 Ada Ligget's
Mar. 29	General Meeting 7:15 Wayne Public Library
Apr. 2	Special Saturday Lunch Bunch 12:15 Rails located at 10 Whitehall Rd., Towaco.
Apr. 9	AAUW-NJ Annual Meeting 8:30 AM-2:30 PM Forsgate Country Club
Apr. 12	Board Meeting 4:30-6:00 Bea Kettlewood's
Apr. 15	Games Night Dot Anton's 7:30
Apr. 15	<i>Advance Deadline</i>
Apr. 19	GWA Annual Meeting 11:00-2:00 PCTI
Apr. 28	Literature Group 7:30 Dorothy Quinn's
————— SAVE THE DATES —————	
May 18	Annual Awards & Scholarship Dinner 6:00 Villa Verde Restaurant

MEMBERSHIP DUES

Dear Members,
Please send in your 2016-17 dues by June 1st to: Stella Hyman.
Please make out the check for \$80.00 to AAUW-GWA.

2015-2016 OFFICERS

Co-Presidents

Lorraine LaShell • Jeanne Michaud

Program VP

Dorothy Quinn

Membership VP

Julie Tiso

Secretary

Ruth Liston

Treasurer

Stella Hyman

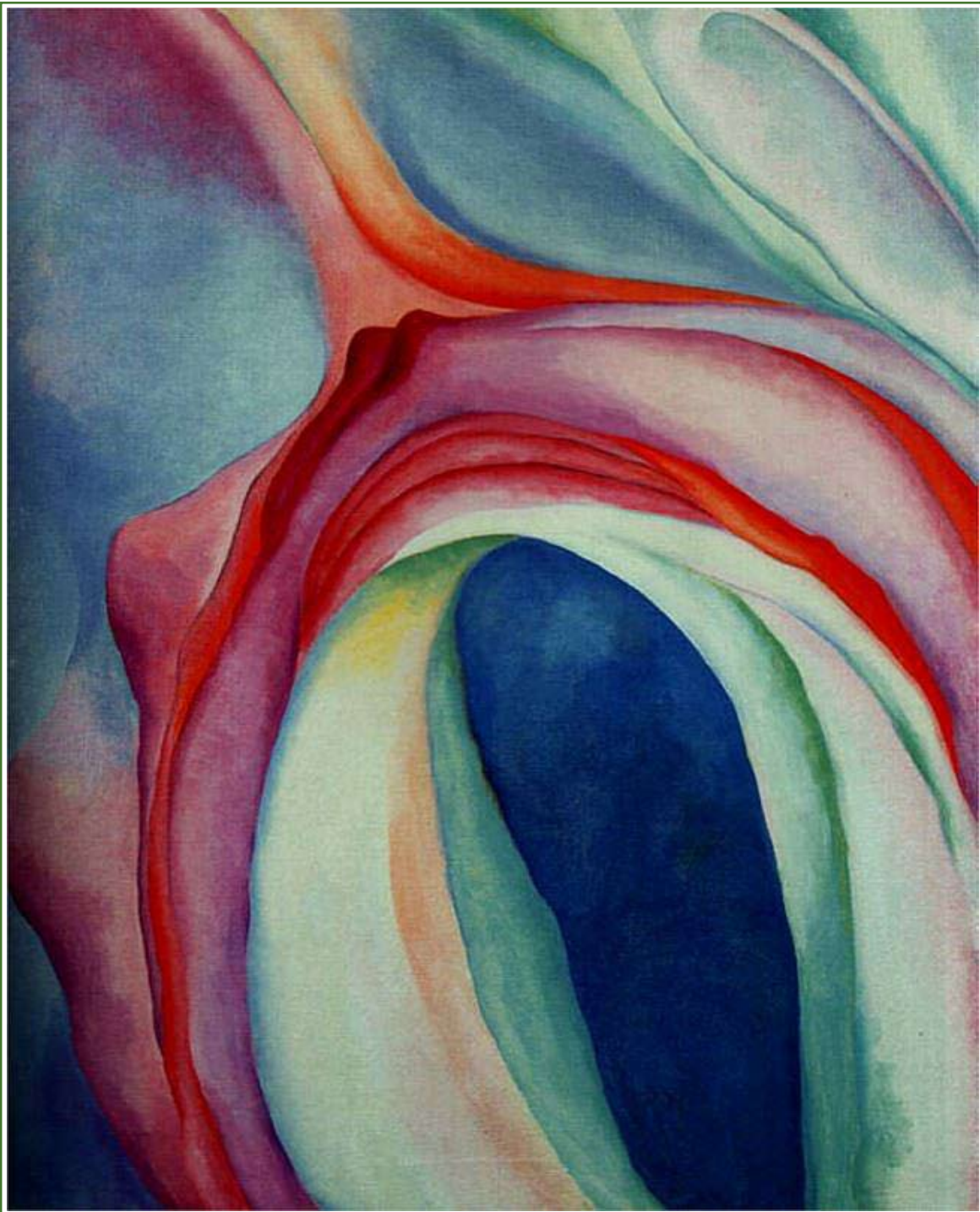
WOMEN'S HISTORY MONTH

GEORGIA O'KEEFE

LED BY MARILYN FISH

The GWA branch is honoring Women's History Month with a presentation entitled, Georgia O'Keeffe, The First Woman Artist in the American Modernists Tradition. Marilyn Fish, our branch member, who brings her education, experience and talent in the visual arts, will be our presenter. She will focus on Georgia O'Keeffe's life and innovative work in this twentieth century period of art.

The program will be held at the Wayne Township Library on Valley Road at 7:15 pm on March 29. Refreshments will be served and a branch meeting will follow.



*Music Pink
and Blue
by Georgia
O'Keeffe*



CALL FOR 2016 GIRLS HALL OF FAME NOMINATIONS

VALUABLE RECOGNITION OF GIRLS' LEADERSHIP INITIATIVES

The Greater Wayne Area Branch (GWA) of the American Association of University Women (AAUW) is a part of the renowned, highly visible national organization that works to break through barriers for women and girls by means of advocacy, education, philanthropy and research.

The purpose of the Girls Hall of Fame is to recognize and cultivate girl leaders by seeking out and awarding individuals for notable evidence of leadership, service and legacy.

Benefits of being inducted into the Girls Hall of Fame

- Endorsement of the inductee's work by the GWA Branch of AAUW, a highly regarded national women's organization.
- Publicity for the inductee, perhaps leading to local support of her ongoing project.
- Opportunity to meet and network with other girl leaders.

Qualifications for Nomination

To be eligible the nominee must:

- Attend school in Bergen, Essex, Morris, or Passaic County.
- Have completed or be pursuing an independent project with evidence of success.
- Demonstrate leadership ability in a project with ongoing lasting benefits.
- Be no more than a high school senior in the fall of 2016.
- Have no relationship to a GWA Branch member.
- Have permission from a parent or guardian to respond to a request for project-related information. Inductees are expected to attend the award ceremony in the fall.

Nomination Process

Nominators should fill in the Girls Hall of Fame Nomination Form which can be found online at <http://greaterwaynearea-nj.aauw.net> and submit it online or print it out and mail the form to: Girls Hall of Fame, 1217 Four Seasons Drive, Wayne, NJ 07470. For further information email girlshalloffame@gmail.com or call 551-404-4075.

DEADLINE FOR SUBMISSION IS JUNE 1, 2016

PROGRAMS

General Branch meetings are USUALLY held on the THIRD Wednesday of the month from September through May (except November and December) at the Wayne Public Library, 461 Valley Road, Wayne, NJ. Meetings are open to the public and all are welcome. Refreshments are served at 7:15 pm, programs begin at 7:30 pm and the evening concludes with a business meeting. Topics are selected to be both timely and informative and to appeal to the interests and

concerns of the membership. For details on the upcoming programs, please see our website <<http://greaterwaynearea-nj.aauw.net>> and *The Advance*.

General Meeting Dates for March-May

March 29, 2016: Women's History Month Program

April 19, 2016: Annual Business Meeting at PCTI

May 18, 2016: MAY SCHOLARSHIP, AWARDS AND DINNER - Villa Verde Restaurant in Wayne

THEMED BASKET RAFFLE

Ruth Liston

It has been a tradition that the Greater Wayne Branch assemble a basket to be raffled at the AAUW State Meeting to be held at Forsgate Country Club on April 9. The Branch Board has decided that the basket theme this year will be an "Italian Dinner." Therefore, any donation that is relevant would be gratefully accepted.



Just to give you some background on the raffle. Each state branch is asked to donate a themed basket to be raffled at the meeting. The revenue realized—usually about \$700—goes to National to be used on AAUW programs.

Those of us who have participated in the past, have found it to be fun seeing all of the decorated baskets and choosing which we would like to win.

Please let me know what you plan to donate so that we do not have 10 lbs. of pasta. You can bring your donation to the March 29 meeting, drop it at my home or give me a call and I will be glad to pick it up.

GOURMET GROUP



Win Reinhardt, Caroline Mossip

Gourmet Group had a recent visit to Axton's Restaurant in Pompton Lakes, which is owned by chef Anton Testino. We enjoyed dishes including pan seared grouper with roasted peppers and artichoke hearts, and basil, roasted garlic and goat cheese ravioli, and other well-prepared dishes. Gourmet Group co-leaders Win and Caroline will be exploring new restaurant possibilities and planning more outings during 2016.

SCHOLARSHIP COMMITTEE

Caroline Mossip

Your scholarship committee thanks each member who contributed to our 2016 scholarship fund. Our scholarship is made possible solely by your generous donations. The committee has contacted all local 2-year and 4-year colleges and universities, informing them about our scholarship. Applications are already coming in, and we anticipate that we will choose a 2016 winner that we can all be proud of supporting, as she works toward her associate's or bachelor's degree. The committee will be meeting during the last week of April to choose our finalist, and she will be presented with her check at our annual awards dinner on Wednesday May 18 2016.

PUBLICITY INFO REQUEST

Caroline Mossip

If you see any article about our AAUW GWA Branch in your local newspaper or newsletter, or on a website, please save a copy and let Caroline Mossip know. As publicity chair, she needs this feedback to see where our PR information is appearing. This will assist her in finding the best places to provide information about our branch. You can contact Caroline by phone/text or by email.

BRIDGE



Marlys Huss

The bridge group continues to meet on Monday evenings. We start at 7:30 pm and play until 9:30 pm, after which we have tea, coffee and dessert. Please call Marlys for the weekly location of the game.

ART INTEREST GROUP

Bea Kettlewood

On March 2nd we viewed Romanticism, Realism and Impressionism. On March 16th we will continue into our venture into Modern styles painted or sculpted by artists who happen to be women and who have become part of abstract-movement groups: post-impressionists, geometric-abstractionists, expressionists and surrealists. The artists will include: Marguerite



Marguerite Thompson Zorach

Thompson Zorach (a.k.a. Mrs. Zorach), Georgia O'Keefe, Louise Nevelson, Alice Neel and Kay Sage.

On April 20th we will take the next step into non-objective style followed by a return

to subject matter with Pop art followed by a return to non-objective Op art and conceptual art followed by a return to sharp focus realism. We will view the works of Elaine De Kooning (Mrs. De Kooning), Lee Krasner (Mrs. Pollock). Sculptor Marisol from Venezuela ventured into Pop and Audrey Flack returned to strong realism. Plus others in all the above styles.

Composition arrangement is the same whether a viewer likes looking at color and line movement or whether the viewer wants to see a "picture" of something to which he/she can attach a name.



Georgia O'Keefe

GAMES NIGHT

The next Games Night will be Mar. 11 at Win Reinhardt's. On Apr. 15 we will meet at Dot Anton's. We begin at 7:30 pm and play games until 10, at which time we have light refreshments.

Games Night is open to all members. Please call the hostess at least 3 days in advance to let her know you are coming.

LUNCH BUNCH

Marianne Ritter

Judy Shivy

Special Saturday Lunch Bunch Sat., April 2 in Towaco

Mark your calendars and join us for a special Saturday Lunch Bunch on Sat., April 2 at Rails Steakhouse restaurant in Towaco. Lunch Bunch that Saturday will be the usual time, 12:15 p.m. at Rails located at 10 Whitehall Rd., Towaco.

Rails comes highly recommended to us for a tasty lunch on a Saturday afternoon. The name is misleading - it is far from just a steakhouse but has a variety main dish salads, paninis, burgers and other sandwiches, in addition to hot entrees on the menu.

To reserve your seat at the Saturday lunch table at Rails on April 2, please e-mail or phone Marianne Ritter no later than noon on Friday, April 1st or e-mail or phone Judy Shivy. It will be good to meet, eat, chat and relax on a Saturday afternoon in April. Please invite new or newer members, neighbors, friends, co-workers, etc. to join us.

Please attend the annual GWA branch meeting on April 19 at Passaic County Technical Institute in Wayne. The meeting will also feature a delicious lunch.

LITERATURE GROUP

All are welcome.

Meeting starts at 7:30 pm. Please let Hostess know 3 days in advance if you plan on attending. However, last minute changes are expected and can be accommodated.

Date: March 24, 2016

Hostess: Ada Liggett

Book: THE BOSTON GIRL: A NOVEL

Author: Anita Diamant

Leader: Ann Raynor

Date: April 28, 2016

Hostess: Dorothy Quinn

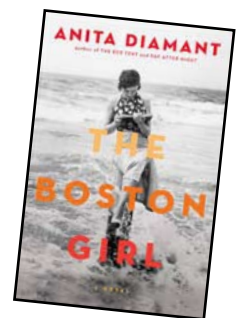
Book: JAMES MADISON &

THE STRUGGLE FOR THE BILL OF RIGHTS

Author: Richard Labunski

Leader: TBD

It has come to my attention that this book is a difficult read for a number of our members. Therefore, I am suggesting that we leave some time to discuss "All the Light We Cannot See" which was cancelled. For additional information or car pooling contact Win Reinhardt.



AAUW GREATER WAYNE AREA BRANCH

PURPOSE

The purpose of this branch shall be to further AAUW's mission to advance equity for women and girls through advocacy, education, philanthropy, and research

DIVERSITY STATEMENT

In principle and practice, AAUW values and seeks a diverse membership. There shall be no barriers to full participation in this organization on the basis of gender, race, creed, age, sexual orientation, national origin, disability, or class.

VALUE PROMISE

By joining AAUW, you belong to a community that breaks through educational and economic barriers so that all women have a fair chance.



Greater Wayne Area Branch
428 Boulevard
Pompton Plains, NJ 07444

MEMBER TOWNS

Bloomington
Butler
Englewood
Hoboken
Kinnelon
North Haledon
Nutley
Pequannock
Pompton Lakes
Pompton Plains
Wanaque
Wayne
West Milford

BRANCH MEMBERSHIP APPLICATION

Join one of nearly 1,000 AAUW branches across the country. Participate in meetings and community activities.

CONTACT US (For branch use. Fill in or affix label.)

Branch name/state Greater Wayne Area
Contact name Greaterwaynearea-NJ.aauw.net
Phone/e-mail _____
No branch listed above? Contact 800.326.2289 or connect@aauw.org to find a branch near you.

PERSONAL INFORMATION

☐ Female ☐ Male

● Name _____
● Address _____
● City/state/zip _____
● Home phone _____ Work phone _____
● E-mail _____
● College/university _____ State _____
● Highest degree earned _____ Year _____
● Major _____ Date of birth _____

Ethnicity: Hispanic (Y or N)

☐ White ☐ American Indian/Alaska Native ☐ Black/African American
☐ Native Hawaiian/Pacific Islander ☐ Asian ☐ Other

☐ Occasionally AAUW's membership list is made available to carefully screened companies or organizations. Check here if you do not want your name included.

ELIGIBILITY

I am a graduate holding an associate or equivalent (RN), baccalaureate, or higher degree from a regionally accredited institution, as stated above.

Signature _____

Date _____

MEMBER RECRUITER

Name _____ City/state _____
Branch name (if applicable) _____

● REGULAR MEMBERSHIP Valid until July 1st, 2016

FY15 national dues \$24.50 state \$ 5 + branch* \$10.50 = total \$ 40
AAUW national individual membership dues are \$49; \$46 is tax deductible as a charitable contribution, and \$3 is not because it supports the AAUW Action Fund's 501(c)(4) Lobby Corps and get-out-the-vote activities.

● GRADUATE STUDENTS Graduate students enrolled in a regionally accredited educational institution can join AAUW for \$9.40 + state \$2.50 + branch \$5.25 = total \$17.15. Valid until July 1st, 2016

● UNDERGRADUATE STUDENTS Undergraduate students enrolled in a two- or four-year regionally accredited educational institution can join as branch student affiliates. Valid until July 1st, 2016

state \$ 2.50 + branch \$ 0 = total \$ 2.50.

National and Branch dues Free for WPU Students - If join as e-student affiliates

MAKE CHECK PAYABLE TO (Fill in or affix label.)

AAUW-GWA

RETURN TO (Branch mailing address)

Name AAUW GWA Branch
Address 93 Harrison Rd.
City/state/zip Wayne, NJ 07470

*The AAUW branch membership year extends from July 1 through June 30.