

The Advance

The Bulletin of the Greater Wayne Area Branch of the AAUW



Volume Q No.2

<https://www.greaterwaynearea-nj.aauw.net>

November-December 2022

AAUW GREATER WAYNE AREA BRANCH PURPOSE

The purpose of this branch shall be to further AAUW's mission to advance equity for women and girls through advocacy, education, philanthropy and research.



Dear Members

Fall is upon us. Hunter Moon or Harvest Moon, your choice! We have good things to report. Our Walk-a Thon was very successful. We raised almost \$4000.00. The yearly total for fundraising for scholarships so far has approached \$9000.00! Thank you, Joan London, for an outstanding job as Fundraising Chair.

Our "Thank You" Party on October 7 at Ruth Liston's house was just that:

A thank you to members with no agenda except that it was simply good company, good food and drink, and an opportunity to acknowledge each other. It always amazes me (although it shouldn't) how collegial our group is—from volunteering to head interest groups and contributing to our programs as well as hosting our interest clubs. It appears that everyone responds to a need or a project that makes our branch so special.

The presentation our branch made to the Wayne Rotary Club on October 12th went very well, especially with the PowerPoint program produced by Bobbi Breslow and the informational hand out designed by Peggy Gardner. I think we have the possibility of a new and fruitful partnership with this group.

On October 26 several members took a trip to the Whitney Museum in NYC, arranged by Elaine Kirsch

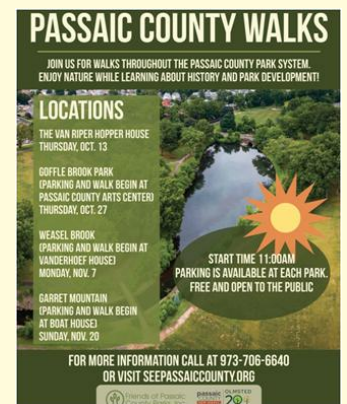
who is co-chair of Cultural Events with Meryl Crowell.

I look forward to seeing you at the annual Holiday Party December 11. Details about the event were sent to members in an email and are in this issue.

Enjoy this festive season,

Arline Lowe
President GWA

GWA vice president and Friends of Passaic County Parks Commissioner, Linda Nardone, has started a program she calls History in Motion which involves visiting local historic houses and parks. Each visit includes a 15-20 talk about the house by a knowledgeable docent and a walk of about one mile in the surrounding park. Upcoming walks will be on November 7 at Weasel Brook Park in Clifton and November 20 at Garret Mountain Reservation in Woodland Park. This is a great opportunity to learn something and get exercise. Contact Linda for more details.





Our trip to the Whitney Museum to see the current Edward Hopper exhibit and to walk on the High Line was very successful.

I'd like to do more trips but not all to museums. Certainly one trip should be to see the current Belle De Costa Greene and friends exhibit at the Morgan Library. This could be combined with another smallish place.

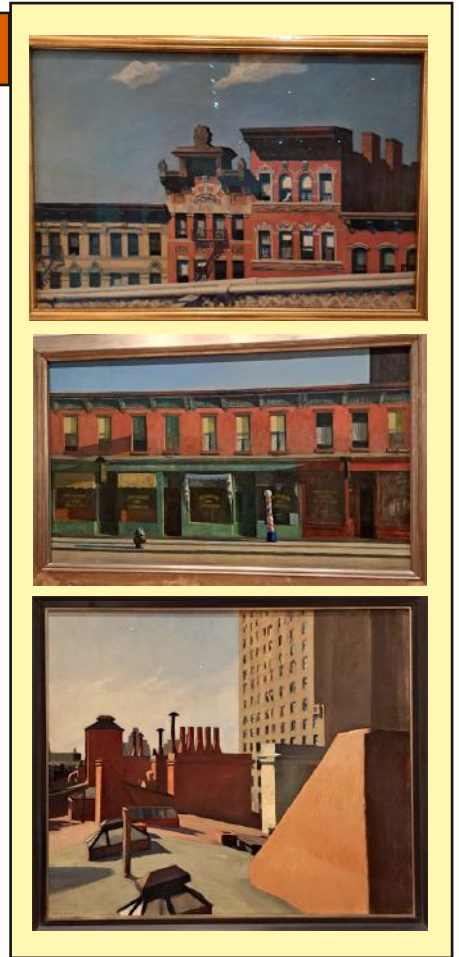
Theater in NYC or NJ is good. How much are people willing to pay for tickets? Prices are higher than I remember.

I encourage members to submit other ideas to me for outings in NYC and NJ.

Elaine Kirsh



Photos by Peggy Gardner except the group shot above. Top three right: paintings by Edward Hopper. All others are views from the Highline where you could almost step into a Hopper painting.



As you will see from the enclosed flyer, we are celebrating our Holiday Party with the Mountain Lakes Branch. It will be our pleasure to join them at the Rockaway River Country Club on Sunday, December 11 at 11:30 am for a wonderful brunch. And as an added treat we will be entertained by the Mountain Lakes Chorale, of which our member, Elaine Dolsky, is a participant.

<https://www.rockawayrivercc.com>

So looking forward to seeing all of you then. As the flyer indicates, send your reservation check for \$60 made out to AAUW Mountain Lakes to Barbara Davis, 60 Lake Shore Drive, Montville, NJ 07045.

When you send your check, please let me know that you will be attending so I will have an attendee count for Greater Wayne along with the ability to arrange car pooling.

Ruth Liston

Social Concerns will be in touch via email regarding our December donations collection!
Thank you,
Ada Liggett & Diane Snyder Ricart
Chairpersons

When we think of illegal immigrants, we generally think of young men escaping violence or totalitarian regimes, or traveling to find jobs in agriculture, construction or restaurants. However, more than half of those traveling are women, with or without their children, to find a better life as well; many who are unaccompanied by a husband or male companion. These women leave behind poverty, conflict, and climate related disasters, sexual and gender-based violence to pursue educational and work opportunities for themselves and their children.

After a dangerous journey, should they arrive at a destination in the U.S., these women search for jobs as domestics, farm workers or laborers. Their hope is to find steady work for wages above what they would receive at home. They have to adapt to a life very different from the one they left behind to a culture which is foreign as well. In addition, their stressors are compounded by their dual roles as workers and many as mothers.

Not only must women migrants (legal or illegal) from Third World countries negotiate their way through racial and ethnic discrimination, they are exploited because of their sex. There is a willingness to accept wages and working conditions that native-born Americans will not. Because of the pressure of family responsibility, they tend to be more docile and less likely to speak up for fear of losing their jobs. Employers also make the assumption that these women are working for extra cash while waiting to get married or believe they are not concerned with upward mobility and their stagnation becomes a self-fulfilling prophecy.

There are also many risk factors regarding the health of female immigrants and their families. Low income, poor occupational health and safety conditions, poor diet, and unfamiliarity with the health care system, coupled with the stressors of living in a strange and sometimes hostile environment are just some of the factors that contribute to the poor health of these originally young and vigorous women. The constant fear of being reported or detained ultimately exacerbates the stress. It compels these women to tolerate over-priced, crowded, substandard housing, or even reluctant to complain about working conditions.

Although their health is at greater risk, these women are not eligible for basic preventative services. Pregnant

women without Social Security numbers are not eligible for government medical services or supplementary food programs even though they are the ones who are in greatest need. Also, these women do not have access to childcare and many women have no choice but to leave their young children home unsupervised or bring them to their jobs.

The stressful lives of these workers affects their families and others intimately connected with them. There is a disturbing amount of domestic violence in homes of undocumented workers which can include child abuse and battering. As a result, there are relatively high frequencies of emotional disorders. The children must learn to deal with new disruptive and stressful living situations. They are called upon to make major adjustments in their early years.

For instance, if they are born in the U.S., they may be sent to their mother's home country to be brought up by relatives until they reach school age. When they return to the U.S. to begin school or preschool classes, they frequently have problems adapting to a new culture, language and family situation. When they reach adolescence the children must learn to cope with drugs, violence and other dangers that fall heavily on those living in impoverished conditions.

Both parties in Congress know that they must address the humanitarian concerns in an immigration policy that addresses the legal status for this population of vulnerable, illegal underclass. In fact, there is a bipartisan bill in Congress, the Bipartisan Border Solution Act S.1358, which insures resources for four new processing centers, watchdogs at processing centers to ensure safety of the migrants while in custody and 150 additional processing immigration judges. The bill also provides safe placement of unaccompanied alien children in households which underwent background checks for criminality and physical or sexual abuse. This bill falls short on many issues, such as procedures for those who do not qualify for asylum or the financial strain on the border communities. It does not address all the problems of immigration, but it is a start.

I urge members to notify their Congressional Representatives to push this bill to the floor. Albeit a stepping stone for solutions, we must urge them to not

continued on next page

continued from previous page

only compromise on a path to citizenship, but also include provisions for the health, education and safety of housing for this population; in summary, a policy based on humanitarian basic needs and social values. A strong and humane immigration policy will only strengthen our country as a whole, with immigrants as in the past filling jobs that presently go unfilled,

supporting the economy, and most importantly supporting the American value of welcoming the stranger as it has for generations.

Further comments and suggestions are welcome and may be published in the next Advance by sending them via email to Dorothy Quinn. This is an effort to start a dialogue on the many issues that confront us as a nation and women in particular.

Contactless Payments

What are they and how do you use them?

Recently, I had no cash with me to reimburse my AAUW friend for dinner. I asked her if she had PayPal, Venmo, or Zelle. As she didn't, I went home, accessed my bank account online, and sent her a paper check. It would take 3-5 days to receive the amount. If she had set up a contactless payment app, she would have received the payment instantaneously.

What are contactless payments?

Contactless payments come in two main forms of a credit card –mobile wallet or app payments, and via contactless technology embedded directly into the card (Tap-and-Pay at register).

Mobile wallets work similarly to tap-to-pay cards, minus the credit card that are used in various retail establishments.

- Contactless payments are not only more convenient but also more secure -- and now more sanitary -- than swiping your card. No card information is saved, so the purchasers' information cannot be used to make another purchase.
- Contactless payments and mobile wallets process much faster (in about half the time).
- Mobile payment services like Venmo, PayPal, or Zelle allow you to safely transfer money directly from your bank account to third parties with a simple touch of a button. This eliminates the need to pull out cash or your card.



Mobile wallets work similarly to tap-to-pay cards, minus the credit card.

The **Apple wallet** app is for **iPhone users**, while the **Google Pay app** is for **Android phones**. It's where you securely keep your credit and debit cards, transitcards, boarding passes, tickets, car keys, and more ...



PayPal, Venmo, and Zelle

These apps allow you to buy, sell, send, receive and explore all in one place. Zelle is associated with specific banks on their website (Send money) Download the app from either the Apple or Google app stores. Follow directions to add your bank account or credit card information, and follow instructions. It's that simple! No need to carry cash or checks. Even if it seems reckless to send real money through an app, these apps are relatively safe to use. They all use data encryption technology to protect your account information, which means no one else can access your credit card or bank account. Needless to say, NEVER share your personal information with anyone you don't know and trust.

Bobbi Breslow



On October 12 members of the Greater Wayne Area Branch gave a presentation to the Wayne Rotary Club. The purpose of the presentation was to inform the Rotary about AAUW, its mission and goals, and how the branch works to implement those goals.

GWA President, Arline Lowe, spoke first and introduced the following speakers in turn:

- Lorraine Lashell who gave a history of AAUW, national and branch, and showed a video of Stephanie Rim one of our 2022 scholarship winners
- Joan London who spoke about our successful fundraising efforts
- Ruth Liston who described the advantages of membership including several interest groups
- Linda Nardone wrapped up the presentation by outlining the many synergies between our organizations and suggested exploring ways we might work together in the future.

The presentation was made more professional by the Power Point and business cards produced by Bobbi Breslow, our own “techie”, and Peggy Gardner who designed a new membership flyer distributed to Rotary members.

Our members were warmly greeted, enjoyed a delicious lunch and had opportunities to interact with Rotary members. Rotary members are

volunteers who work locally, regionally, and internationally to combat hunger, improve health and sanitation, provide education and job training, promote peace, and eradicate polio under the motto Service Above Self. As a secular organization, Rotary is open to all people regardless of race, color, creed, religion, gender, or political preference.

The Wayne Rotary meets every Wednesday, 12:15, at Vila Verde restaurant in Wayne. If you are interested in learning more, visit <https://www.rotaryclubwaynenj.org>.

Lorraine LaShell

AAUW
empowering women since 1881

**American Association of University Women
Greater Wayne Area Branch**

Who Are We
A group of active women who enjoy socializing and working together

What is Our Mission
To support equity and educational opportunities for women

Annually we award scholarships to women, over 25, who request financial assistance in order to complete their undergraduate degrees.

New members are always welcome
If you are a graduate of a two or four year college and would like to meet a group of fun loving, interesting women consider joining us.

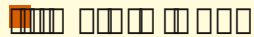
What Member Activities Do We Offer

- Current Events Discussion Group
- Culinary Group
- Book Club
- Cultural Outings
- Luncheons
- Bridge and Mah Jongg (online and in person)

For more information
Contact Ruth Liston, ruthliston@optonline.net
Visit us online at <http://greaterwaynearea-nj.aauw.net>



This fall has been a busy time for fundraising activities.



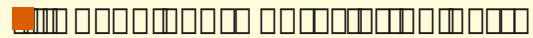
This year's Walk-A-Thon took place on September 21 at Barbour Pond in Wayne. Those who walked enjoyed the beautiful weather as well as the company of fellow members. We walked the track several times while singing a song and chanting a cheer orchestrated by Elaine Dolsky. Carol Palmer Yomtov provided musical 'instruments' for those who wished to use them.

Lunch was provided to all who attended and included wraps, chips, water and desserts from Costco as well as homemade tuna sandwiches. Following lunch, Arline Lowe ran a general meeting.

The Walk-A-Thon was a huge financial success. We made \$3600 from sponsors and donations, better than last year when we raised \$3000. A big Thank You to all who made this event such a success!

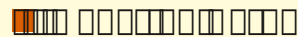
After doing the Walk-A-Thon for two consecutive years, we will not be continuing it next fall. I am looking for a different fund raiser that could

generate substantial dollars. If you have any ideas, please contact me.



An Appreciation Party was held on October 7 from 3-5pm. The original venue (Linda Nardone's home) was changed to Ruth Liston's the day before the event since Linda's husband came down with Covid. This 'new' activity was initiated in order to thank all members for their financial as well as personal support for raising scholarship funds.

Those who attended enjoyed the opportunity to socialize with each other in this relaxed setting. Refreshments and drinks were served.



Don't forget to use donation cards as a means of recognizing life events. Contact Lorraine LaShell if you wish to purchase some.

More to come - Several additional activities are being considered for this winter/spring.

Joan London
Fundraising Chair



The summer time has been a productive and fun time for the Wayne Branch of AAUW. The weather presented a challenge to the Summer Social--which we overcame and then had a really good time. The Walk-A-Thon turned out to be more than we could have expected, both financially and weather-wise.

And now we are preparing for the Fall/Winter season. Lunch Bunch on November 10 will be held at a wonderful Italian restaurant, Buona Sera, located in Haskell. Easy to find, easy access. Hope you will be joining us. Please RSVP to me by November 8.

On Sunday, December 11 at 11:30 we will be celebrating the holiday with the Mountain Lakes Branch, at a brunch at the Rockaway River Country Club in Denville. One of our newer members, Elaine Dolsky, is a member of the Mountain Lakes Branch Chorale and has been the catalyst of the plan to join

the Mountain Lakes Branch at their holiday brunch. And, as an added treat, the Chorale will entertain us.

If you have not received the email regarding this event, please let me know.

I am excited about our two groups celebrating together and am excited about the wonderful venue, the brunch and the entertainment we will enjoy at the Country Club.

Going forward, we would like to hear from you as to what types of programs you want. Should they be in person? On zoom? Do you want a speaker? A social gathering? Looking forward to hearing from you soon.

Ruth Liston



On Thursday, November 10 Lunch Bunch will be held at Buona Sera Restaurant on 1069 Ringwood Ave., in Haskell at noon. Note it is a little earlier than usual but the restaurant



closes at 2ish to prepare for the evening crowd. It is a great Italian restaurant and is located at the end of a strip mall with plenty of parking. BYOB. Access is very easy. If possible, bring small cash.

Please let me know if you are coming. Look forward to seeing everyone!!!

Ruth Liston



The Culinary Group will not meet in November and December due to upcoming holidays. See you next year when we will enjoy more culinary delights.

Carolyn Noble
Culinary Group Chair



November

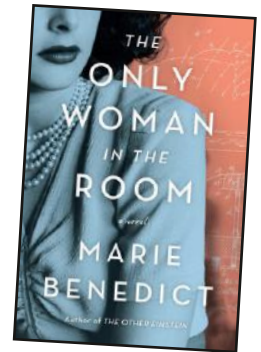
Jennifer Sullivan	Nov 11
Linda Nardone	Nov.21

December

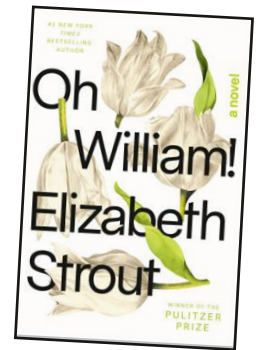
Diane Ricart	Dec 6
Arline Lowe	Dec 18
Pat Durante	Dec 20
Bobbi Breslow	Dec 26
Linda Trongone	Dec 26



On Wednesday, November 2nd at 1-2:30, Lorraine LaShell will host the meeting at her home, 8 Clifford Drive, Wayne. The discussion leader is Diane Snyder Ricart. Our book selection is: *The Only Woman in the Room* by Marie Benedict. "She was beautiful. She was a genius. Could the world handle both? A novel about Hedy Lamarr."



Wednesday, December 7th at 1-2:30. Our host/discussion leader Ada Liggett. Her address is 156 Chestnut Drive, Wayne. Our book selection is: *Oh William!* by Elizabeth Strout. "Oh William!" explores the mysteries of marriage and the secrets we keep, as a former couple reckons with where they've come from — and what they've left behind."



PLEASE LET ME KNOW IF YOU PLAN ON ATTENDING.
THANK YOU!

Looking forward to seeing you soon!
Diane Snyder Ricart
Chairperson



The Games schedule remains the same through the end of the year. Beginning in 2023, there will be some minor adjustments. If you have any suggestions regarding additional games and/or different games and times, just let me know. All are welcome; just let me know if you would like to be included.

Call or email me with any requests.

Ruth Liston

NOVEMBER

Sunday	Monday	Tuesday	Wednesday	Thursday	Friday	Saturday
30	31	1	2 1PM Lit Gp@Lorraine 3:30 Bridge online	3 12PM: Bridge in-person	4	5
6	7 3 PM Bridge online	8 2PM: MahJongg online	9 3:30 Bridge online	10 12 PM Lunch Bunch(Buona Sera) 12PM: Bridge in-person	11	12
13	14 11:30 AM Bridge in-person	15 2PM: MahJongg online	16 3:30 Bridge online	17 12PM: Bridge in-person	18 1 PM Current Events@Elaine K	19
20	21 3 PM Bridge online	22 2PM: MahJongg online	23 3:30 Bridge online	24 12PM: Bridge in-person	25	26
27	28 11:30 AM Bridge in-person	29 2PM: MahJongg online	30 3:30 Bridge online	1	2	3

December

Sunday	Monday	Tuesday	Wednesday	Thursday	Friday	Saturday
27	28	29	30	1		
4	5 3 PM Bridge online	6 2PM: MahJongg online	7 1 PM Lit Group@Ada 3:30 Bridge online	8 12PM: Bridge in-person		
11 11:30 Holiday Social, Rockaway CC	12 11:30 AM Bridge in-person	13 2PM: MahJongg online	14 3:30 Bridge online	15 12PM: Bridge in-person	16	17
18	19 3 PM Bridge online	20 2PM: MahJongg online	21 3:30 Bridge online	22 12PM: Bridge in-person	23	24
25	26	27 2PM: MahJongg online	28 3:30 Bridge online	29 12PM: Bridge in-person	30	31

AAUW GREATER WAYNE AREA BRANCH

PURPOSE

The purpose of this branch shall be to further AAUW's mission to advance equity for women and girls through advocacy, education, philanthropy, and research.

DIVERSITY STATEMENT

In principle and practice, AAUW values and seeks a diverse membership. There shall be no barriers to full participation in this organization on the basis of gender, race, creed, age, sexual orientation, national origin, disability, or class.

VALUE PROMISE

By joining AAUW, you belong to a community that breaks through educational and economic barriers so that all women have a fair chance.



empowering women since 1881

Greater Wayne Area Branch

MEMBER TOWNS

Bloomington
Englewood
Franconia, NH
Kinnelon
Little Falls
Mt. Pleasant, SC
Montville
New Foundland
North Haledon
Nutley
Old Tappan
Parsippany
Pompton Lakes
Pompton Plains
Riverdale
Teaneck
Wayne



ELECTED OFFICERS

President	Arline Lowe
Vice President	Linda Nardone
Treasurer/Finance	Ann Raynor
Secretary	Elaine Dolsky
Membership VP	RuthListon*
Program VP	Ruth Liston
Communications VP	Lorraine LaShell

APPOINTED OFFICERS

Advance Design	Peggy Gardner
Advance Editor	Lorraine LaShell
Advance Special Features	Dorothy Quinn
Diversity & Inclusion	Elaine Kirsh
Environment Issues	Barbara Stomber
Fundraising	Joan London
Parliamentarian	Bea Kettlewood
Public Policy	Arlene Sullivan
Publicity	Abby Schwartz
Scholarship	Lorraine LaShell/Marianne Ritter
Social Concerns	Ada Liggett/Diane Ricart
Sunshine	Ada Liggett
Technology	Bobbi Breslow
Website	Lorraine LaShell

INTEREST GROUPS CHAIRS

Culinary Group	Carolyn Noble
Cultural Events	Elaine Kirsh
Current Events	Mary Querrazzi
Games: Bridge	Partiicipants
Games: Mahjong	Partiicipants
Lit Group	Diane Ricart
Lunch Bunch	Ruth Liston/ Elaine Dolsky

*Acting Membership VP